

## ECO A TAD SERIES



### Installation, Operation and Service Manual

Model Number \_\_\_\_\_

Serial # \_\_\_\_\_

Date placed in service \_\_\_\_\_

**IMPORTANT: READ CAREFULLY  
BEFORE INSTALLING OR OPERATING LIFT**

Part orders are subject to a \$50 minimum charge.



This manual was current at the time of printing. To obtain the latest, most updated version, please contact Presto-ECO Customer Service Department at 1-800-343-9322.

# CONTENTS

INTRODUCTION .....	4
RESPONSIBILITY OF OWNERS AND USERS .....	5
SAFETY ALERT SYMBOLS AND SIGNAL WORDS.....	6
SAFETY PRECAUTIONS.....	7
GETTING STARTED .....	8
INSPECTION.....	8
SAFETY DEFINITIONS.....	8
FUNCTIONAL DESCRIPTION .....	9
OPERATING INSTRUCTIONS.....	12
ROUTINE MAINTENANCE .....	13
OIL VISCOSITY RECOMMENDATIONS.....	18
ORDERING REPLACEMENT PARTS.....	17
TROUBLE SHOOTING .....	18
LIMITED WARRANTY .....	20

## List of Figures

Figure 1	General Layout of TAD .....	10
Figure 2	Safe Servicing of Lift .....	11
Figure 3	Hydraulic Schematic .....	14
Figure 4	Electrical Schematic.....	15
Figure 5	Power Unit Layout for TAD.....	16

## Tables

Table 1	Hydraulic Oil Specifications .....	12
---------	------------------------------------	----

# INTRODUCTION

This manual attempts to provide all of the information necessary for the safe and proper installation, operation and maintenance of scissor lifts. It is important that all personnel involved with the installation, maintenance or operation of the scissor lift read this manual.

Where unique situations arise, that are not covered in this manual, call Presto-ECO Lifts for further instructions at 1-800-454-7159.

The scissor lift has a nameplate that provides the load capacity ratings, serial number and model identifications. Please refer to these numbers when ordering parts or requesting further information.

The scissor lifts are designed for lifting, lowering and positioning a variety of loads. WHERE UNIQUE SITUATIONS ARISE, THAT ARE NOT COVERED IN THIS MANUAL, CALL PRESTO-ECO LIFTS FOR FURTHER INSTRUCTIONS.

The scissor lifts are designed for inplant/nonhazardous location use only. These units are not for personnel lifting.

# Responsibility of Owners and Users

## **Inspection and Maintenance**

The device shall be inspected and maintained in proper working order in accordance with this Presto-ECO A owner's manual.

## **Removal from Service**

Any device not in safe operating condition such as, but not limited to, excessive leakage, missing rollers, pins, or fasteners, any bent or cracked structural members, cut or frayed electric, hydraulic, or pneumatic lines, damaged or malfunctioning controls or safety devices, etc. shall be removed from service until it is repaired to the original manufacturer's standards.

## **Repairs**

All repairs shall be made by qualified personnel in conformance with Presto-ECO A's instructions.

## **Operators**

Only trained personnel and authorized personnel shall be permitted to operate these lifts.

## **Before Operation**

Before using the device, the operator shall have:

- Read and/or had explained, and understood, the manufacturer's operating instructions and safety rules.
- Inspected the device for proper operation and condition. Any suspect item shall be carefully examined and a determination made by a qualified person as to whether it constitutes a hazard. All items not in conformance with Presto-ECO A's specification shall be corrected before further use of these lifts.

## **During Operation**

The device shall only be used in accordance with this owner's manual.

- Do not overload.
- Ensure that all safety devices are operational and in place.

## **Modifications or Alterations**

Modifications or alterations to any Presto-ECO A industrial positioning equipment shall be made only with written permission from Presto-ECO A Lifts.

# SAFETY ALERT SYMBOLS AND SIGNAL WORDS

The safety of all persons operating, maintaining, repairing, or in the vicinity of this equipment is of paramount concern. This is a powerful machine with moving parts, and is capable of causing personal injury if proper precautions are not taken. Therefore, throughout this manual, certain hazards have been identified which may occur in the use of the machine, and there are appropriate instructions or precautions which should be taken to avoid these hazards. In some cases, there are consequences which may occur if instructions or precautions are not followed. Below are the symbols and signal words along with their definitions referenced from ANSI Z535.4 - Product Safety Signs and Labels.

**4.11 Safety Alert Symbols:** A symbol that indicates a hazard. It is composed of an equilateral triangle surrounding an exclamation mark. The safety alert symbol is only used on hazard alerting signs. It is not used on safety notice and safety instructions signs.



**A): for use with DANGER signal word;** (safety white triangle, safety red exclamation mark, safety red background)

**B): for use with WARNING signal word;** (safety black triangle, safety orange exclamation mark)

**C): for use with CAUTION signal word;** (safety black triangle, safety yellow exclamation mark)

**D) and E): for use with DANGER, WARNING, or CAUTION signal word;** (D: is a safety yellow triangle with a black border and safety black exclamation mark; E: is a safety yellow triangle with a safety black exclamation mark and a safety yellow border around a safety black band)

NOTE: D and E are provided to allow for consistency with certain ISO standards such as ISO 3864-1 and ISO 3864-2.

**4.14 Signal Words:** The words used in the signal word panel. The signal words for hazard alerting signs are “DANGER,” “WARNING,” and “CAUTION.” Safety notice signs use the signal word “NOTICE.” Safety instruction signs use signal words that are specific to the situation.



DANGER indicates a hazardous situation which, if not avoided, will result in death or serious injury.



WARNING indicates a hazardous situation which, if not avoided, could result in death or serious injury.



CAUTION indicates a hazardous situation which, if not avoided, could result in minor or moderate injury.



NOTICE is used to address practices not related to physical injury.



SAFETY INSTRUCTIONS (or equivalent) signs indicate specific safety-related instructions or procedures.

NOTE: DANGER, WARNING or CAUTION should not be considered for property damage accidents unless personal injury risk appropriate to these levels is involved.

# SAFETY

The safety of all persons installing, using, servicing, or working near the unit is of paramount concern to Presto-ECOALifts. The lift is a powerful machine with moving parts, and is **capable of causing personal injury if proper precautions are not taken**. Therefore, throughout this manual, Presto-ECOALifts have identified certain hazards, which may occur in the use of the unit, and provided appropriate **instructions** or precautions that should be taken to avoid these hazards. In some cases, Presto-ECOALifts has also pointed out the **consequences** that may occur if Presto-ECOALifts instructions or precautions are not followed. Presto-ECOALifts use the following nationally recognized system for identifying the severity of the hazards associated with its products:

**DANGER** – Immediate hazard that will result in severe personal injury or death.

 **DANGER**

**WARNING** – Hazard or unsafe practice, that could result in severe personal injury or death.

 **WARNING**

**CAUTION** – Hazard or unsafe practice, that could result in minor personal injury or property

 **CAUTION**

In the interest of safety, please read the entire manual carefully. You must understand the material in this manual before you install, use, or service the unit. If you have any question about any of the instructions in this manual, please contact Presto-ECOALifts at 1-800-343-9322.

## SAFETY INSTRUCTIONS

- Do not perform any repair work on a lift with a load on the platform or with the table in a raised position.
- All personnel must stand clear of the lift when the lift is in motion.
- Do not put hands or feet under lift table.
- Do not perform any repair or maintenance work with the lift in an open position without securing it first with proper maintenance devices.
- Do not stand, sit or climb on the lift at any time.
- Do not use the lift on soft, uneven or unstable surfaces.
- Do not exceed the load capacity rating on the data plate.
- Do not place a load on a moving lift.
- Do not exceed load capacity.
- Place a load in the center of the lift and be sure that the load is secured properly.

# GETTING STARTED

PLEASE READ THE INSTALLATION INSTRUCTIONS CAREFULLY BEFORE INSTALLING, USING OR SERVICING THE TAD SERIES LOADING DOCK. The safety of all persons installing, using or servicing the TAD Series Loading Dock is of utmost importance to Presto-ECO Lifts. The TAD Series Loading Dock is capable of supporting heavy loads and is capable of causing SEVERE PERSONAL INJURY if used improperly or certain safety precautions are not taken. When properly used and maintained, the TAD Series Loading Dock will provide many years of safe, trouble free service. If you have any questions about any of the instructions in this manual or about the use of this product, PLEASE contact your DEALER or Presto-ECO Lifts.

TAD is the model designation for the TAD Series Loading Dock. Throughout this service manual the TAD may be referred to as the "lift".

## INSPECTION

IMMEDIATELY upon receipt of the TAD Series Loading Dock, remove all packing and strapping material and visually inspect the unit for damage. Any damage to the lift MUST BE NOTED on the delivery receipt. After the preliminary inspection is conducted, the lift should be thoroughly inspected for any concealed damage that was not readily apparent during the preliminary inspection. Any concealed damage found that was not noted on the delivery receipt should be IMMEDIATELY reported in writing TO THE DELIVERING CARRIER.

## SAFETY INSTRUCTIONS

### DANGER!

1. READ THIS MANUAL COMPLETELY BEFORE USING AND THOROUGHLY UNDERSTAND AND FOLLOW ALL SAFETY INSTRUCTIONS.
2. A falling Loading Dock can cause SEVERE PERSONAL INJURY or DEATH. NEVER go under the lift platform until the load is removed and the scissor mechanism is blocked with the maintenance bars.
3. The maintenance bars have been designed for use only when the lift is UNLOADED. NEVER place any load on the lift platform with the maintenance bars engaged. SEVERE PERSONAL INJURY or DEATH and PROPERTY DAMAGE could result.
4. DO NOT attempt to remove or loosen the platform or base frame hinge pins. Loosening or removing these pins could cause the lift to suddenly collapse, EVEN IF THE MAINTENANCE BARS ARE ENGAGED. SEVERE PERSONAL INJURY or DEATH and PROPERTY DAMAGE could result.
5. The lifts electrical circuits use voltages which can cause SEVERE PERSONAL INJURY or DEATH. DO NOT work with the electrical components unless you are a QUALIFIED ELECTRICIAN.
6. The lift's electrical components can create sparks. DO NOT install the lift, the power unit or the controls in an area where potentially explosive dusts, gases, or vapors may be present. Failure to comply may result in an explosion and cause SEVERE PERSONAL INJURY or DEATH.



### WARNING!

1. The TAD Series is designed for use with stable, uniformly distributed loads on a solid level floor. DO NOT concentrate the load at one point on the pallet or platform. ALWAYS uniformly distribute the load over the supporting surface. DO NOT use the TAD Series for any purpose other than its intended use.
2. SHEARING HAZARD. ALWAYS keep hands and feet clear of the scissor mechanism and all moving components. DO NOT put hands or feet under the lift platform when in use. SEVERE PERSONAL INJURY could result.
3. CRUSHING HAZARD. ALWAYS keep hands and feet clear of all moving components. DO NOT put feet in the base frame when in use. SEVERE PERSONAL INJURY could result.
4. PINCH POINT HAZARD. ALWAYS keep hands and feet clear of the underside of the lift platform. SEVERE PERSONAL INJURY could result.
5. NEVER leave the loaded TAD lift unattended unless the lift platform is in the fully lowered position.
6. ALL lift servicing must be performed by qualified personnel. Unauthorized modifications to this TAD lift may compromise the performance and safety of the system. UNDER NO CIRCUMSTANCES should you attempt any repair or service that is not covered in the service manual or authorized by Presto-ECO Lifts.
7. ALWAYS ensure all safety warning labels are in place and legible. If not, remove the TAD from service and replace the required labels.
8. ALWAYS securely anchor the base frame to the floor to ensure maximum stability and the proper operation of the lift

### CAUTION!

1. DO NOT continue to operate the hydraulic pump if a squealing noise is heard coming from the pump. The pressure relief valve is operating. Continued operation of the pump with the relief valve operating will cause permanent damage to the pump.
2. DO NOT change the relief valve setting. The relief valve is installed to protect the operator and the lift.

## FUNCTIONAL DESCRIPTION

The TAD Series of lifts have been primarily designed for loading dock applications. The most important advantage of the TAD Series is that it is finitely adjustable in height. The installation of this lift provides full flexibility, allowing you to load and unload at any truck bed elevation within the lift's travel range.

The TAD Series has a portability feature (see picture #1, on page 10).

### WARNING!

MAINTENANCE DEVICES ARE TO BE USED ONLY WHEN THE LIFT IS UNLOADED. USE OF THE MAINTENANCE BARS TO SUPPORT A FULLY LOADED LIFT COULD RESULT IN SEVERE PERSONAL INJURY OR DEATH.

# FIGURE 1: GENERAL LAYOUT OF TAD

- 1- STANDARD BRIDGE
- 2- STANDARD RAMP
- 3- MAINTENANCE BAR (QTY. 2)
- 4- BASE ASSY.
- 5- LEG ASSY.
- 6- PLATFORM ASSY.
- 7- HOUSING
- 8- PUSH BUTTON

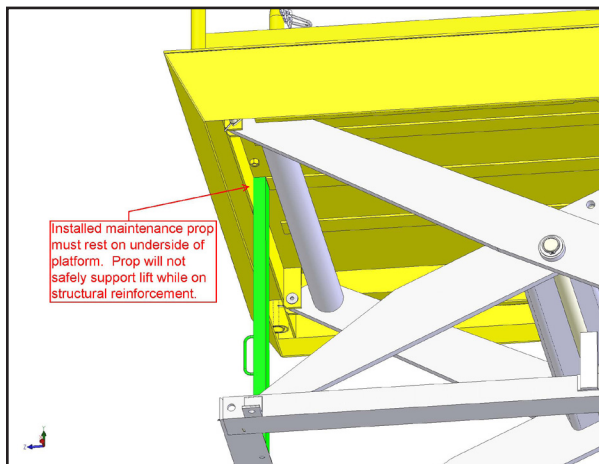
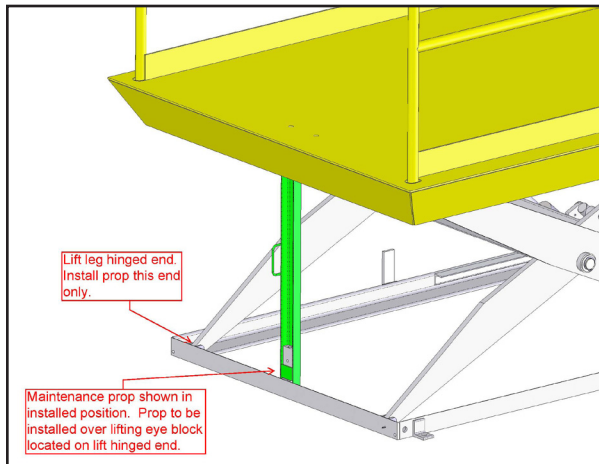
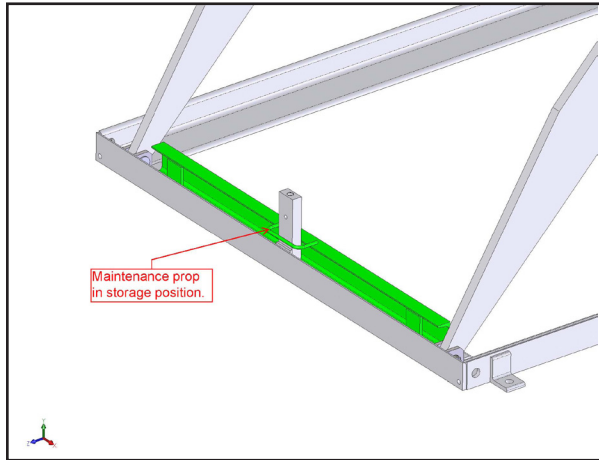


## FIGURE 2: Safe Servicing of the Lifts

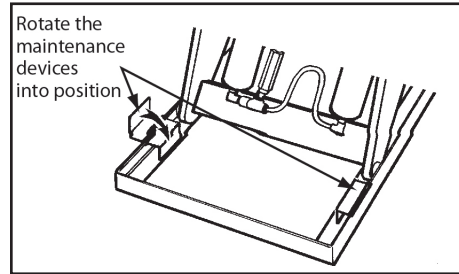
Your lift will be equipped with one of these maintenance devices

**Note:** In some cases the upper travel limit switch may need to be overridden to utilize the maintenance devices

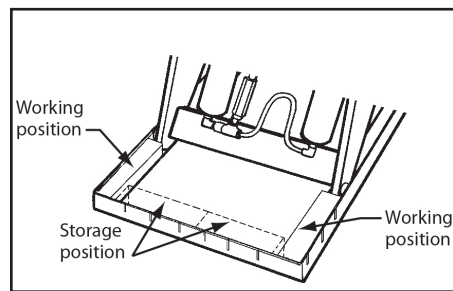
### Maintenance Bar



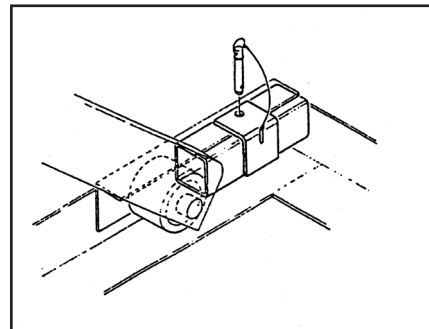
### Flip in Style



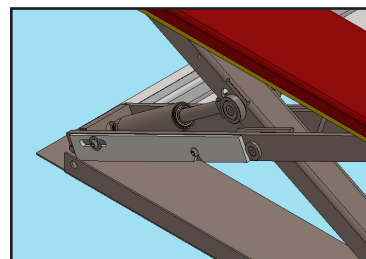
### Block Style



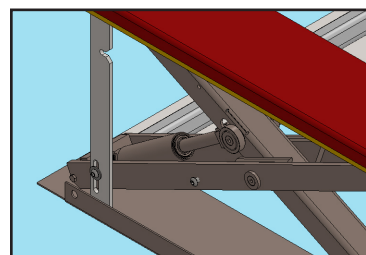
### Block Style



### Maintenance Chock



Maintenance Chock Disengaged (stored position)



Maintenance Chock Engaged

# OPERATING INSTRUCTIONS

(SEE HYDRAULIC SCHEMATIC ON PAGE 14 AND ELECTRICAL SCHEMATIC ON PAGE 15)

The load capacity rating as stamped on the nameplate of your TAD designates the maximum lifting capacity with a uniformly distributed load. This capacity must never be exceeded, as permanent damage may result. Lowering loads that exceed the rated capacity will result in excessive wear or damage to the lift.

Consult the factory before any modification is performed in the field. NOTE: Any modification of the lift in the field, without the express written consent of Presto-ECO Lifts, will void any and all warranties.

The TAD is furnished with constant pressure ("dead-man" type) push button controls.

The main push button on the Power Unit Housing has an "ON-OFF" Key Lock Switch. Turn it "ON".

Pressing the "UP" button, starts the motor, (see wiring diagram) which in turn runs the hydraulic pump. The cylinders begin to extend and the platform starts to rise. The platform will rise as long as the "UP" button is pressed and the "UP LIMIT SWITCH" is not activated. On releasing the button, the platform ceases to rise and will remain at that particular elevation.

When pressing the "DOWN" button, the Down Solenoid Valve is energized. The cylinders start retracting as the oil returns to the reservoir and, upon releasing the button; the platform ceases to lower, remaining at that particular elevation.

In the event that the lift is overloaded, the relief valve will open because of excessive pressure build up, and oil will bypass into the reservoir. When the lift reaches a preset vertical travel the "UP LIMIT SWITCH" will be actuated. This shuts off the power to the motor. At this point, pressing the "UP" button will have no effect. The platform will remain stationary at the desired elevation.

Always remember that the motor runs only when the "UP" button is pressed and the Down Solenoid Valve is energized only when the "DOWN" button is pressed.

## Some "Tips" to the Operator

1. Always load the lift properly by centering the load on the platform as much as possible.
2. Never use the lift if it is in need of repairs, or in the case of a malfunction.
3. Notify your maintenance personnel if you notice anything out of the ordinary, such as binding, odd pump noises, etc.
4. Do not continue to press the "UP" button if the lift is not rising. You can permanently damage the motor or pump by doing so.

### Table 1 – Hydraulic Oil Specifications

If the lift will be used at normal ambient temperatures, Presto-ECO supplies the unit with Conoco Super Hydraulic 32 oil. This may be replaced by any other good quality oil with 150 SSU at 100° F and rust and oxidation inhibitors and anti-wear properties. If the lift will be used at ambient temperatures below 0°F, use aircraft hydraulic oil. Use Type 15 aircraft hydraulic oil.

The following are equivalent to Conoco Super Hydraulic 32:

TYPE	MANUFACTURER
AW32 .....	CITGO
DTE 24 .....	EXXON/MOBIL
NUTO H32 .....	EXXON/MOBIL
AMOCO AW32 .....	CHEVRON (AMOCO CO.)

#### CAUTION

It is very important to keep the hydraulic oil free of dirt, dust, metal chips, water, and other contamination. Most of the problems with hydraulic systems are caused by contamination in the oil.

# ROUTINE MAINTENANCE

Raise the lift and engage the maintenance devices before beginning any inspection or work on the unit.

## (A) Monthly Inspections

1. Check oil level, It should be about 1" below top of the tank with the lift in fully lowered position. Add oil as required. (See oil specifications.)
2. Check for oil leaks. See Trouble Shooting Section and correct as necessary.
3. Check roller bushings, axle pin, clevis and pivot points for wear.
4. Check for worn or damaged hydraulic hoses or electrical cords. Repair as necessary.
5. Check rollers for looseness and wear, See Trouble Shooting.
6. Check retaining rings at all axles, pivot points and clevis.
7. Never grease rollers or axles.
8. Check for unusual noise. See Trouble Shooting.

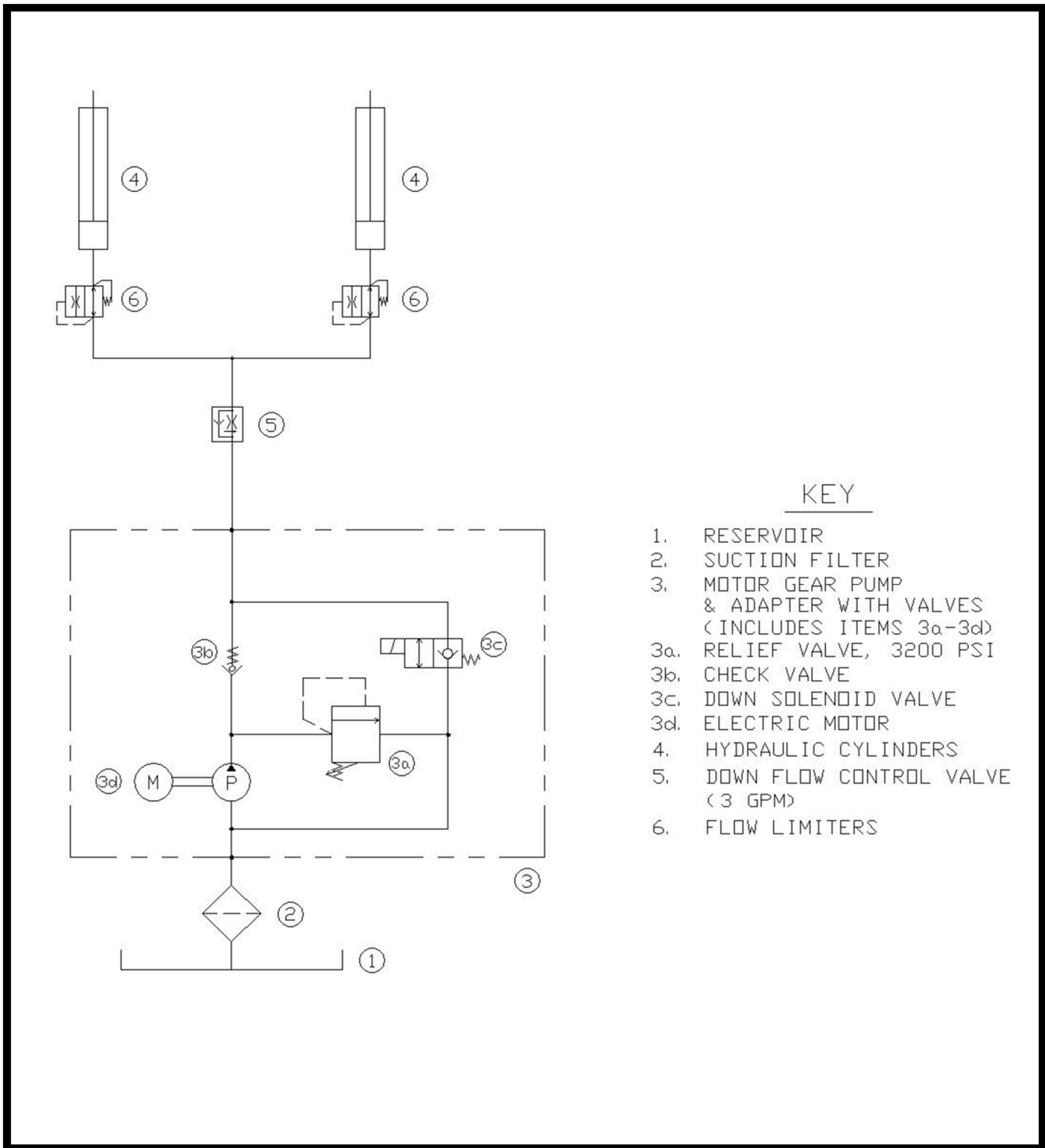
## (B) Yearly Inspection

Oil in reservoir should be changed at least once a year, or sooner if the oil darkens or becomes gritty. Presence of water is indicated if the oil turns milky.

## (C) Winter/Summer Maintenance

Change the oil as per 'Oil Viscosity Recommendations' depending on the ambient temperatures prevailing in your area.

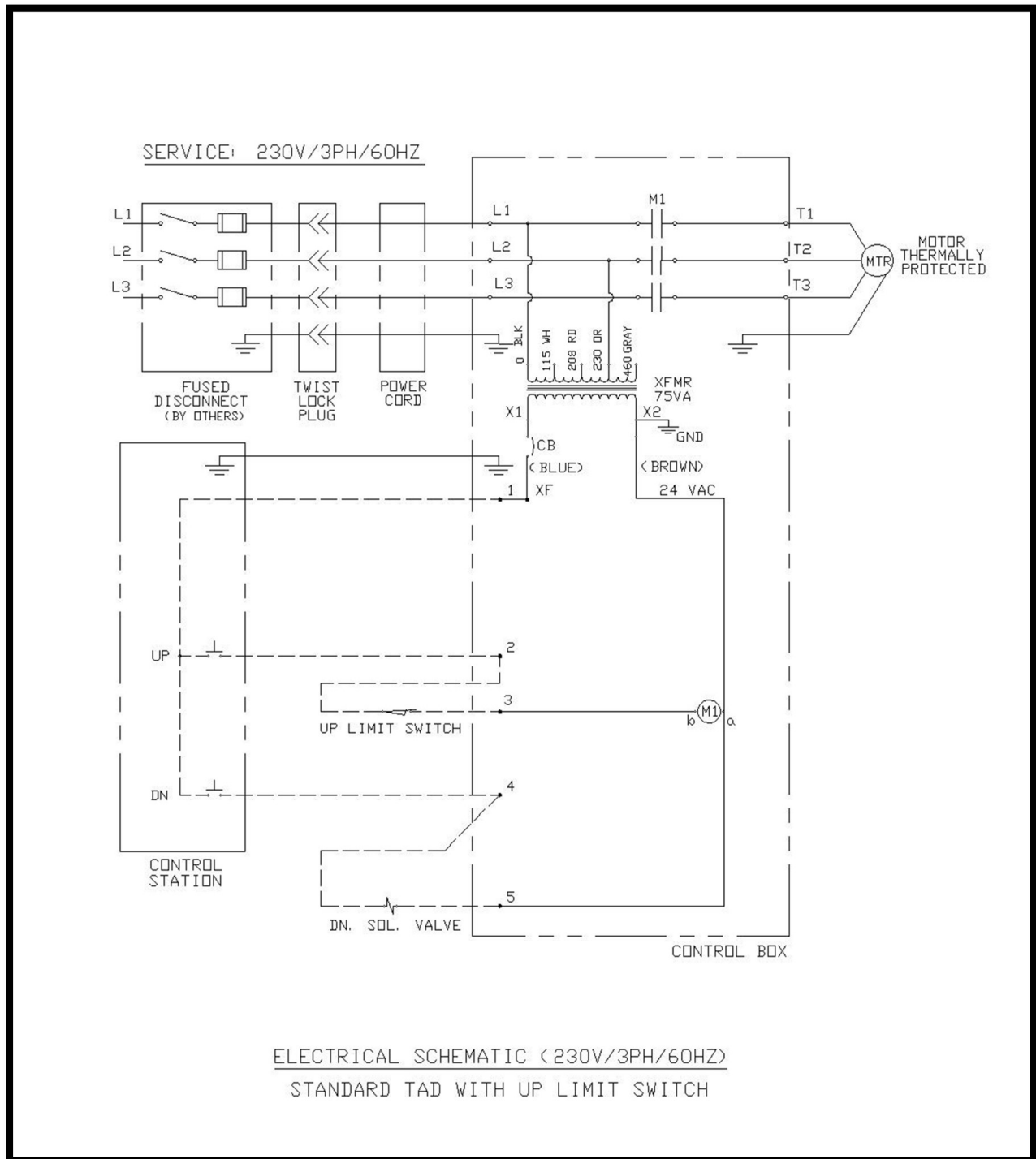
**FIGURE 3: HYDRAULIC SCHEMATIC**



KEY

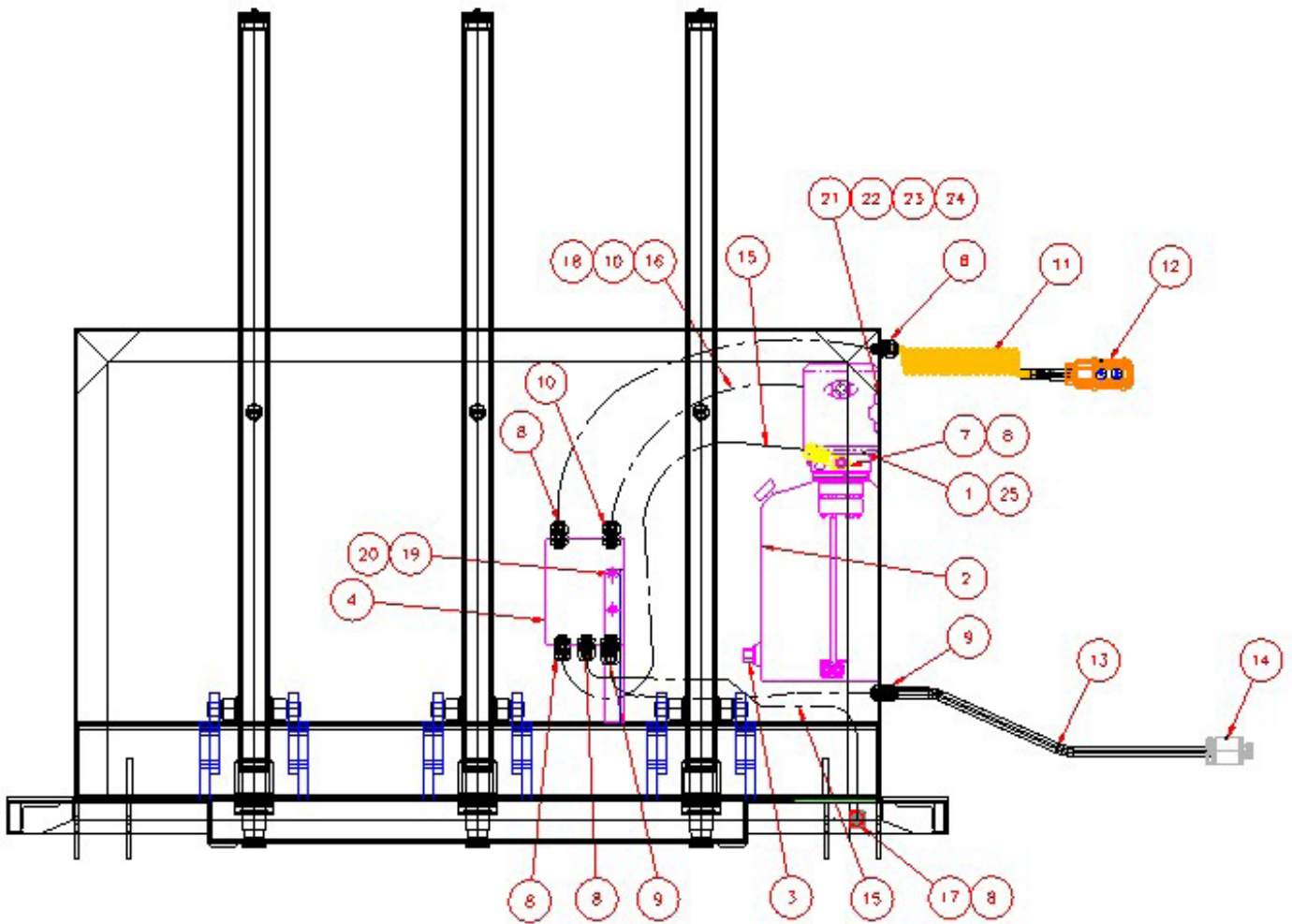
- 1. RESERVOIR
- 2. SUCTION FILTER
- 3. MOTOR GEAR PUMP & ADAPTER WITH VALVES (INCLUDES ITEMS 3a-3d)
- 3a. RELIEF VALVE, 3200 PSI
- 3b. CHECK VALVE
- 3c. DOWN SOLENOID VALVE
- 3d. ELECTRIC MOTOR
- 4. HYDRAULIC CYLINDERS
- 5. DOWN FLOW CONTROL VALVE (3 GPM)
- 6. FLOW LIMITERS

**FIGURE 4: ELECTRICAL SCHEMATIC**



ELECTRICAL SCHEMATIC (230V/3PH/60HZ)  
STANDARD TAD WITH UP LIMIT SWITCH

FIGURE 5: POWER UNIT LAYOUT FOR TAD





# ORDERING REPLACEMENT PARTS

Presto-ECOALifts has carefully chosen the components in your unit to be the best available for the purpose. Replacement parts should be identical to the original equipment. Presto-ECOALifts will not be responsible for equipment failures resulting from the use of incorrect replacement parts or from unauthorized modifications to the unit.

Presto-ECOALifts can supply all replacement parts for your lift. With your order, please include the model number and the serial number of the unit. You can find these numbers on the name plate. This plate is located within the scissors mechanism.

To order replacement parts, please call the Presto-ECOALifts Parts Department. Parts are shipped subject to the following terms:

- FOB factory
- Returns only with the approval of our parts department.
- Credit cards preferred (except parts covered by warranty).
- Freight collect for truck (except parts covered by warranty).
- Freight – prepaid and invoice for small parcel shipments (except parts covered by warranty).
- The warranty for repair parts is 30 days from date of shipment.

Parts replaced under warranty are on a “charge-credit” basis. We will invoice you when we ship the replacement part, then credit you when you return the worn or damaged part, and we verify that it is covered by our warranty. Labor is not covered under warranty for Parts orders.

## **Presto-ECOALifts Parts Department**

50 Commerce Way, Norton, MA 02766

Telephone: 800-343-9322

FAX: 888-788-6496

Email: [service@PrestoLifts.com](mailto:service@PrestoLifts.com)

[www.PrestoLifts.com](http://www.PrestoLifts.com)

[www.ECOALifts.com](http://www.ECOALifts.com)

# TROUBLESHOOTING

Observation	Possible Cause	Remedy	
1. Lift does not raise but pump is running	a. Motor rotation maybe reversed. or humming	a. Change motor rotation. If Lift has been running properly for some time, then it is possible that plant wiring has been changed and the motor is now running reversed.	
	b. Motor may be single phasing, (humming).	b. Check wiring and overloads, fuses, etc., to ascertain that all 3 phase lines are present at the motor.	
	c. Voltage at motor terminals may be too low to run pump at existing load.	c. Measure voltage at motor terminals, or as near as possible, while pump is running under load. If voltage is sufficient, check for inadequate or incorrect wiring as this can starve the motor. Correct as necessary.	
	d. Hose or hydraulic line is leaking.	d. Correct as necessary.	
	e. Oil level in reservoir is low.	e. Add oil.	
	f. Load exceeds capacity requirements. Relief Valve is bypassing the oil back into tank	f. Do not change Relief Valve setting. Instead, reduce the load to rated capacity.	
	g. Suction filter is clogged, starving pump.	g. Remove and clean.	
	h. Suction line may be leaking air, due to loose fittings.	h. Check fittings.	
	i. Filler/Breather cap on tank may be clogged.	i. Remove and clean.	
	j. Down Valve may be energized by faulty wiring, or stuck open.	j. Remove Solenoid Valve, check and clean. (See Hydraulic Section.)	
	k. Hydraulic pump may be inoperative.	k. Disconnect hydraulic line at power unit. Put hose end in a large container and run pump again. If no output, check motor rotation as per 1(a) above. If pump is worn, replace with a new pump.	
	2. Lift rises too slowly.	a. Foreign material stuck in Down Solenoid, causing some oil to bypass back into tank.	a. Lower the Lift. Remove the Solenoid Valve and clean it. (See Hydraulic Section)
		b. Foreign material clogging suction filter, breather cap, pressure line filter, or a pinched hose.	b. Correct as necessary. (See also 1(g), (i).)
c. Low Motor voltage.		c. See 1(c).	
d. Lift overloaded.		d. See 1(f).	
e. Oil is too thick for proper operation.		e. Refer to "Oil Viscosity	
f. Lift operates with a shuddering vibration.		f. Cylinder may be binding. Check with factory.	
g. Pump is inoperative		g. See 1(k).	
3. Motor labors or heats excessively.	a. Voltage may be low.	a. See 1(c).	
	b. Incorrect wiring	b. Check that one leg of the motor lines is not connected to ground.	

# TROUBLESHOOTING

	c. Oil starvation causes pump to bind. High internal heat is developed if this occurs, pump may be permanently damaged.	c. See 1(e). (g). (h). (i). (k).
	d. Binding cylinders.	d. See 2(f).
	e. Oil may be too thick.	e. See "Oil Viscosity Recommendations"
4. "Spongy" or "Jerky" Lift operation. Do not confuse spongy operation with small surges caused by foreign material on Lift wheel roller plate.	a. Air trapped in cylinders.	a. Bleed cylinders by lowering Lift fully and hold "DOWN" button for 20-30 seconds more Raise Lift and repeat procedure several times. Bleed cylinders also, by loosening bleeder screws (item #10) until a steady stream of oil comes out.
	b. Oil starvation.	b. See 1(e). (g). (h). (i).
5. Lift lowers too slowly when loaded.	a. Down Valve filter clogged.	a. Remove Solenoid Valve and clean it.
	b. Pinched tube or hose.	b. Correct as necessary. (In case of pipe, check for obstruction inline.)
	c. Oil too thick.	c. See "Oil Viscosity Recommendations"
	d. Foreign material in Flow Limiter.	d. Remove and clean.
	e. Binding cylinders.	e. See 2(f).
6. Lift lowers too quickly.	a. Leaking hoses. Cracked fittings	a. Correct as necessary. Check underground conduit for evidence of fluid.
	b. Check valve stuck open. (The combination of a stuck Check Valve and open Solenoid Valve will cause excessive speeds.	b. Remove Check Valve and clean it. (See Hydraulic Section)
7. Lift rises then lowers slowly.	a. Down Solenoid Valve may be incorrectly wired or is stuck open due to dirt.	a. See 2(a).
	b. Check Valve may be stuck open.	b. Remove and clean. (See Hydraulic Section).
	c. Check for leaking hoses, fittings, pipes.	c. Correct as necessary.
	d. Cylinder seals may be worn or damaged.	d. Replace seals. (See Cylinder Repair procedure.)
8. Lift has risen, but does not lower.	a. Blown electrical fuse.	a. Check and replace.
	b. Incorrect Down Solenoid Valve wiring.	b. Correct as necessary. (See Wiring Diagram.)
	c. Down Solenoid Valve is stuck.	c. Lightly tap down the Solenoid Coil body to seat it properly. Do not hit hard as it will permanently damage the internal stem. Do not remove the Solenoid Valve from the Block as the unit will come down at a dangerous speed.
	d. Faulty Down Solenoid Coil.	d. Remove and replace.
	e. Maintenance safety bar, or some other object blocking down travel.	e. Raise Lift and remove the safety bar, or whatever object is blocking the down travel, then press the down button.
	f. Binding cylinders.	f. See 2(f).

# Presto-ECO Lifts Limited Warranty Policy

Presto-ECO Lifts warrants all of its products against defects in the welded structural frame and, if applicable, scissor legs from faulty material and workmanship for a period of five years from the date of invoice.

All other components have a limited warranty against defects in faulty material and workmanship for a two year period from the date of invoice and 30 day limited warranty on labor. Please note that prior authorization from Presto-ECO Lifts is required on all warranty work.

There are no implied warranties of any kind, more specifically, there are no warranties of merchantability or fitness for any particular purpose. Presto-ECO Lifts' sole warranty shall be as set forth in this limited warranty.

Presto-ECO Lifts will elect to repair or replace a defective component without charge, if any components should become defective within the limited warranty period. Proof of purchase is required for warranty. The charge for shipping the defective component is the responsibility of the buyer and must be accompanied with an RMA number. The shipping charge to return the component to the buyer is the responsibility of Presto-ECO Lifts.

This limited warranty does not cover labor expense for removal or reinstallation of components after thirty days. This limited warranty shall not cover, among other things: damages resulting from foreign matter or water, failure to provide reasonable and necessary maintenance, and if applicable, use of product while charger is plugged into an AC outlet, or failure to follow operating instructions. The limited warranty is not valid for damage resulting from negligence, accident, unreasonable use, abuse or misuse, exceeding data plate capacities or altering the product without Presto-ECO Lifts authorization.

Presto-ECO Lifts expressly disclaims and excludes any liability for consequential, incidental, indirect or punitive damages or financial loss to people or property resulting from any breach of warranty or the operation or failure of this product.

Presto-ECO Lifts makes no representation that this product complies with local, state, or federal safety/product standards codes. Should this product fail to comply in any way with those codes, it shall not be considered a defect of materials or workmanship. Presto-ECO Lifts shall not be held liable for any damages resulting from noncompliance. It is the dealer's responsibility to exercise this limited warranty. This limited warranty is provided to the original purchaser (defined as the original end user) and is nontransferable. This constitutes the complete and final agreement involving Presto-ECO Lifts limited warranty obligations for products.